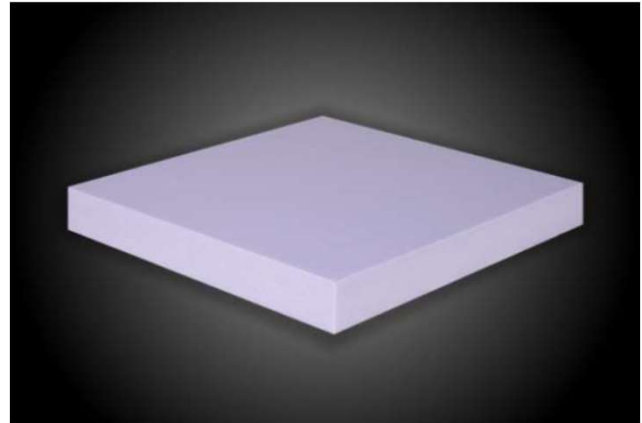




COREVO HD

EXTRUDED POLYSTYRENE BOARD
[XPS - without HCFC - without HFC]



COREVO HD is a thermal insulation sheet in indigo colored extruded expanded polystyrene, without extrusion skin, without CFC or HCFC and with 4 straight edges. The sheets declare compressive strength values ≥ 400 kPa. They have a width of 600 mm, length 2500 mm and thicknesses available from 6 mm to 80 mm. **COREVO HD** is rated to fire EUROCLASS E according to European Standard EN 13501-1. **COREVO HD** complies with the Minimum Environmental Criteria (CAM).

APPLICATIONS WITH COREVO HD: Sandwich panels, isothermal vans, graphic applications, insulation of civil and industrial doors, are integrated into systems for the finished construction of French door spaces, insulation of the



CHARACTERISTIC	STANDARD	UNIT	VALUES
Thickness	EN 823	mm	6 - 80
Thickness tolerances Thickness from 6 mm to 100 mm	EN 823 EN 13164	mm	$\pm 0,5$
Length	EN 822 / ISO 29465	mm	1250 - 2500
Width	EN 822 / ISO 29465	mm	600
Length (l) and width (b) tolerances	EN 13164	mm	l o b \leq 1500: ± 8 l o b $>$ 1500: ± 10
Orthogonality tolerance (Sb)	EN 824/EN 13164	mm/m	1,5
Flatness tolerance (Smax)	EN 825/EN 13164	mm/m	2
Straightness tolerance on the long edge		mm/m	1,5
Density		kg/m ³	35 \pm 10%
Specific heat		J/kgK	1450
Coefficiente di dilatazione termici lineare		mm/mK	0,07
Slab profile	Straight squared edge		
Surface finishing	Rough skinless with or without grooves		
Groove tolerances	Pitch 40 mm	Width 2 mm (-0/+1)	Width 3 mm (-0/+1)

CHARACTERISTIC	STANDARD	UNIT	VALUES	
Thermal conductivity (λ_D) and Thermal resistance (R_D)			λ_D	R_D
Thickness 6 mm - 79 mm	EN 13164	λ_D : W/mK RD: m ² K/W	0,031	
Thickness 80 mm	EN 13164	λ_D : W/mK RD: m ² K/W	0,034	2,35
Compressive stress at 10 % deformation	EN 29469:2022	kPa	≥ 300 – CS(10/Y)300	
Compressive elastic modulus	EN 29469:2022	kPa	10 000	
Tensile elastic modulus	EN 12086:2013	kPa	5 000	
Shear resistance	EN 12086:2013	kPa	≥ 260	
Shear modulus	EN 12086:2013	kPa	2 700	
Traction perpendicular to the faces	EN 12086:2013	kPa	≥ 200 – TR200	
Dimensional stability at 70°C and 90% RH Changes in thickness, length and width	EN 1604	%	≤ 5 – DS(70,90)	
Deformation behavior. Condition test 70° C, 168 h, 40 kPa	EN 1605	%	≤ 5 – DLT(2)5	
Water absorption by immersion (28 days)	EN 16535:2019	Vol %	$\leq 0,7$ – WL(T)0,7	
Water absorption by diffusion (28 days)	EN 16536:2019	Vol %	$\leq 3\%$ – WD(V)3 sp.< 60 $\leq 2\%$ – WD(V)2 sp. 60 $\leq 1\%$ – WD(V)1 sp.> 60	
Resistance to water vapor diffusion (μ)	EN 12086:2013		MU 80	
Frost behavior (freeze - thaw alternation) after water absorption by long-term diffusion	EN 12091:2013	Vol %	≤ 2 – FTCD1 ≤ 1 – FTCD2	
Thickness <60 mm Thickness ≥ 60 mm				
Reaction to fire	EN 13501-1	Euroclasse	E	
Limit temperature of use		°C	+75	
Closed cell average		%	> 96	
VOC (Volatile Organic Compounds)	EN 16516 / ISO 16000	Class/Protocol	A+, Leed, Well, Bream	

COREVO HD 01/08/2024 – 01.24

